

**Brief Specification**

1.6mm panels:  
 Flat Steel  
 Base Plates:  
 Extended Slotted  
 Top Plates:  
 Extended Top Lift  
 Jacklegs:  
 -  
 Lifting Points:  
 Top Corner & Mid High Level  
 Forklift Tunnels:  
 -  
 Staircase fixings:  
 2830mm  
 Link Frame:  
 2550mm  
 Ceiling Height:  
 2400mm  
 Insulation:  
 Roof: 0.17 W/m²K  
 Walls: 0.23 W/m²K  
 Floor: 0.21 W/m²K  
 Construction:  
 Steel Floor Panel 200 x 90 PFC  
 80 x 80 SHS Support Posts c/w Pads  
 Steel Underdrawn

**External Finish (2 Coat + Etch Primer)**

Body: RAL 6002  
 Corners: RAL 6002  
 Plinth: RAL 6002  
 Fascia & Gutter: RAL 6002  
 Windows: White  
 Door: RAL 6002  
 Stairs: Black  
 Fan Grilles: Black  
**NB.**  
 Finishes are indicative therefore it is the client's responsibility to ensure these are correct

**Internal Finish**

Wall Finish: Anti-Fungal Matt White  
 Ceiling Finish: Anti-Fungal Matt White  
 Floor Finish: Polysafe Wood fx PUR 3387 'American Oak'  
 Timber Door Linings & Sills: RAL 7046  
 Internal Door Architrave: RAL 7046  
 100mm MDF Skirting: RAL 7046  
 Shower Room Skirting: 100mm Grey Inset  
 Elfin Kitchen: M-150-Mos-C-RH c/w Cupboard backs  
 1000 Wall Unit c/w Pelmet  
 Extract Hood (To Outside)  
 600mm Larder Unit  
 Stainless Steel Splashback & Cheeks

**Internal Partitions construction**

All Partitions 70 x 35mm framing @ 407 ctrs  
 Type G 15mm pl/bd foil backed each side:  
 Type F as Type G c/w 50mm sound insulation:  
**Plumbing Notes**  
 Elfin Kitchen  
 Dual Flush WC c/w Ceramic Cistern  
 Copper pipework (Schoolboard Clips)  
 Lever Reduced Flow Mixer Spray Pattern Taps

**uPVC TOV3 Window**

White finish double glazed 914w x 1080h frame @ 980mm affl c/w K glass, trickle vents, restrictor hinges & locks  
**uPVC TOV3(F) Window**  
 30 Minute Fire Rated  
 White finish fixed double glazed 914w x 1080h frame @ 980mm affl  
**uPVC HL3 Window**  
 White finish double glazed 600w x 400h frame @ 1621mm affl c/w K glass, trickle vents, restrictor hinges & locks  
**Black-Out Blinds**  
 Grey vertical blinds to suit TOV3 windows

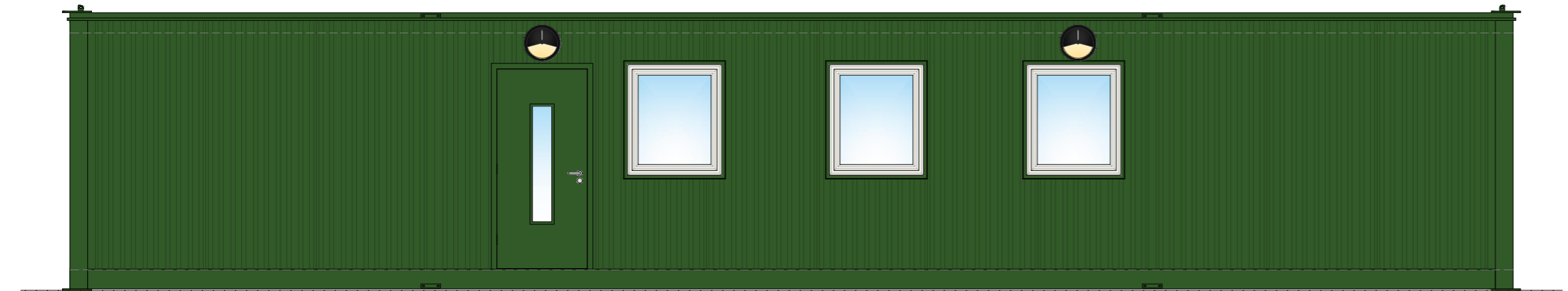
**Key**

Steel Doorset c/w Slot Vision Panel & Door Closer  
 Solid core doors pre finished in white oak  
 3L: 3 Lever Lock  
 Bathroom Lock  
 Vision Panel  
 30 Minute Fire Door  
 Door Closer  
 Indicator Bolt  
 Toilet Roll Holder  
 Mirror  
 Hat & Coat Hook  
 Soil & Vent Stack  
 Mains Cold Water Inlet

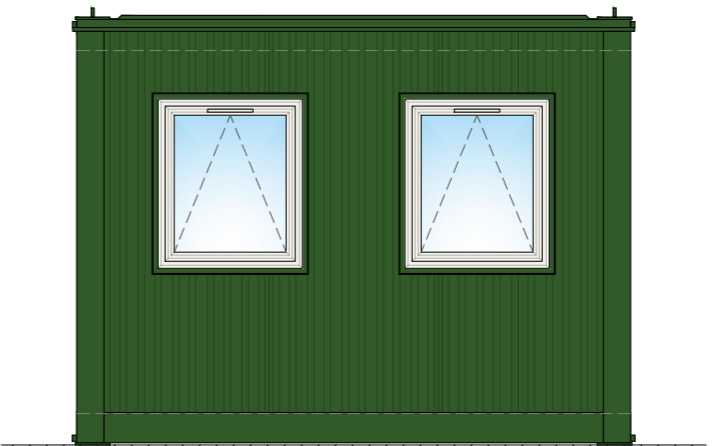
Tolerance: ±2mm  
 Timber Framing: 145mm  
 Prod. No.: -  
 Fleet No.: -  
 Slickers: -  
 I.D. Plate: -  
 Module Weight: -  
 Laden Weight: -  
 Max. Lift Weight: -

**Electrical Key**

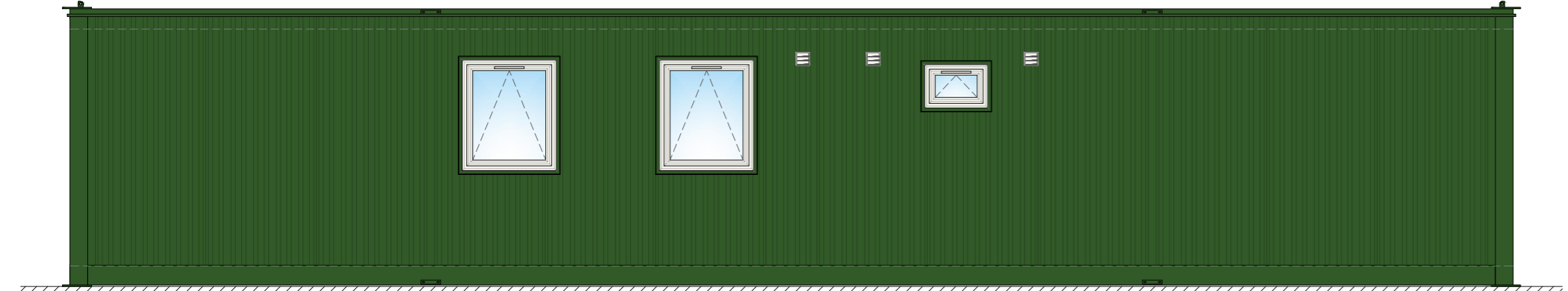
- Single Phase Consumer Unit (Lockable) c/w Surge Protection
- Connection Box
- LED Linear Light (Size Stated)  
E - Emergency Backup
- LED Bulkhead Light c/w Emergency Backup
- LED Emergency Bulkhead Light c/w Legend
- Ansell Eyelid Bulkhead Light c/w Emergency Backup & Presence Detection
- Light Switch
- Emergency Light Test Switch
- Double Sockets @ 500mm affl
- Double Sockets @ 1067mm affl
- TV Socket @ 500mm affl
- Telephone Socket @ 500mm affl
- Shaver Socket @ 1067mm affl
- 8.5kW Electric Shower c/w Wall Switch Isolator
- 15L Water Heater
- Hyco Panel Heater (Size Stated) c/w Onboard Controller
- Hyco Heated Towel Rail
- Extract Fan (Size Stated)  
T - Timer  
Linked to Lighting
- SELV Extract Fan (Size Stated)  
T - Timer  
Linked to Lighting
- Fan Controller & Recessed Transformer
- Smoke Alarm (Mains Powered)
- Heat Alarm (Mains Powered)
- External Sounder Beacon



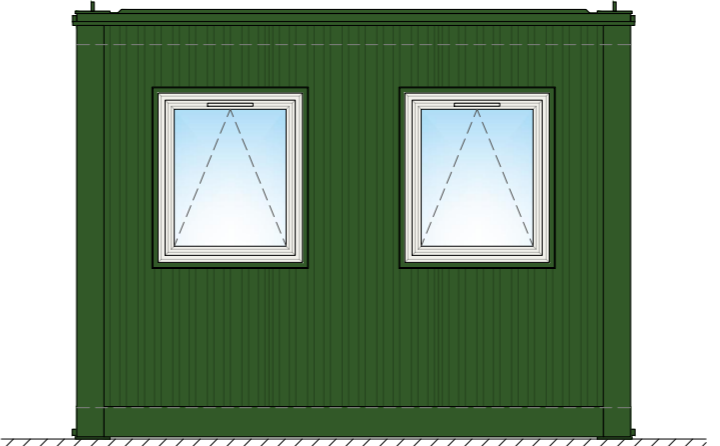
**View A**  
1:50



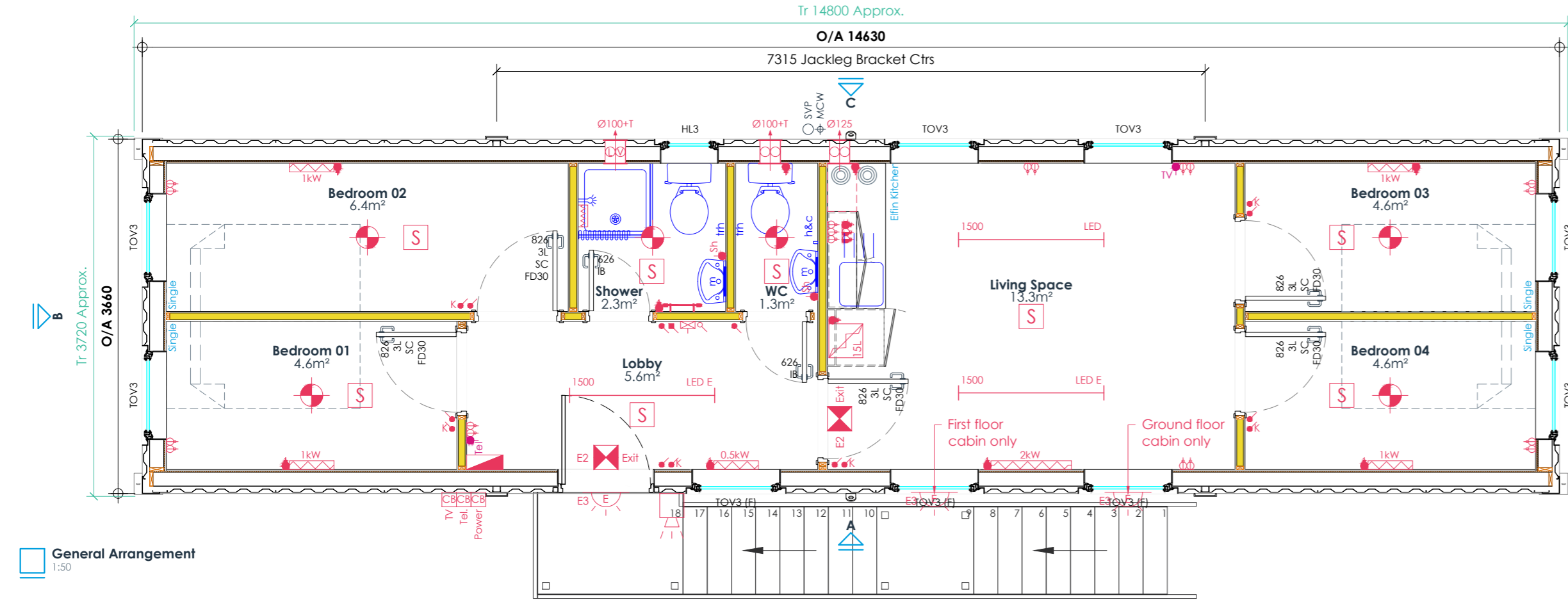
**View B**  
1:50



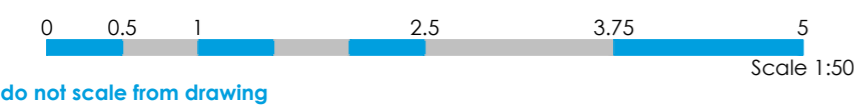
**View C**  
1:50



**View D**  
1:50



**General Arrangement**  
1:50



rev	description	by/chk	date
P01	Issued for approval	ST/RC	13/07/20



client:  
**DENS**

project:  
**Emergency Accommodation**

title:  
**General Arrangement**

date: 13/07/20  
 owner: ST  
 checked: RC  
 project ref: 2021482  
 drawing ref: 100  
 status: S4  
 rev: P01  
 scale @ A2  
 As Shown

